



Instructions for integrating the AC ELWA®-E in Loxone Config

1. Default settings on the AC ELWA-E

Before commissioning, it is essential that you read the assembly instructions that accompany the device, as well as the operating instructions available on line.

Select "Modbus TCP" in the control settings in the AC ELWA-E setup in the web interface (please refer to the AC ELWA-E operating instructions).



The AC ELWA-E only requires the Miniserver Go for operation.

2. Description of the protocols for http and Modbus TCP

These are described in a separate document which can be provided on request.

3. Integrating the AC ELWA-E in Loxone Config



Steps 1 and 2 not required since Loxone Config 8.1

1. Download the xml-file with the "Loxone Package AC ELWA-E" software package from www.my-pv.com

2. Copy the xml file "MB_my-PV AC ELWA-E.xml" into the following directory:

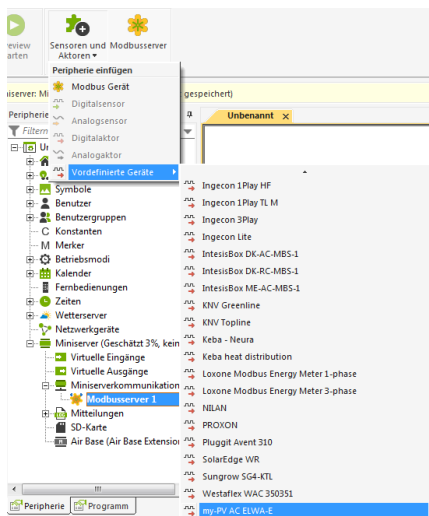
C:\ProgramData\Loxone\Loxone Config 8.0\Templates\Comm

The "ProgramData" folder is a folder that is hidden by the MS Windows operating system. To display the hidden folder and files, adjust the relevant setting under the Windows folder options.

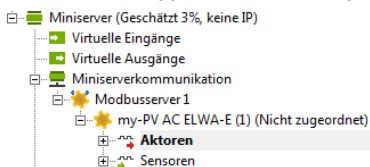


The folder should be in the respective current version of Loxone Config. If you update the software, the xml-file has to be copied into the folder again!

3. Once Loxone Config has been restarted, add a Modbus server in Miniserver – Miniserver communication.
4. Use the "Sensors and actuators" button in – Predefined devices – to add the my-PV AC ELWA-E.



5. The AC ELWA-E appears in the list of peripherals



6. Connect the AC ELWA-E to the controller

To illustrate this, a basic example is provided in the "Loxone Package AC ELWA-E" software package available on www.my-pv.com



NOTE: The „Set Power“-command has to be sent cyclical (e.g. every 5 seconds) to the AC ELWA-E. The corresponding setting is made under "Miniserver communication"!

Subject to change.

my-PV GmbH
Teichstrasse 43, 4523 Neuzeug
www.my-pv.com

