

PROJECT DESCRIPTION

Owner: Christine Yumul

Location: Austral, NSW, Australia

PV-Array: 7 solar PV panels, East facing, total of 2.1kW

System: ELWA in special variant "SC20" for Australia

Hot water boiler: ROTEX Sanicube 300L

Boost-backup: In-built plug-in element

Project description:

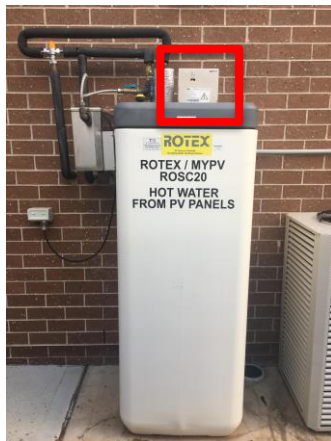
Since July 2019, Christine Yumul and her family are saving 2,281 kWh of electricity per year, this equates to AU\$659*/year (400 Euro) savings. **92% of the water in the tank is been heated by solar PV panels**, which means that Christine only spends AU\$59/year (36 Euro) on electricity for hot water!

In addition, SC20 eliminates the need for plumbing, pumps, pipe heat losses and maintenance, as is the case of other solar thermal hot water systems.

The solar irradiation of the site is comparable to that of southern Spain. Accordingly, the European version of the device named "ELWA" offers just as much potential on the old continent as SC20 in Australia. In Central Europe, solar coverage rates of 50 to 70% are possible for a four-person household.

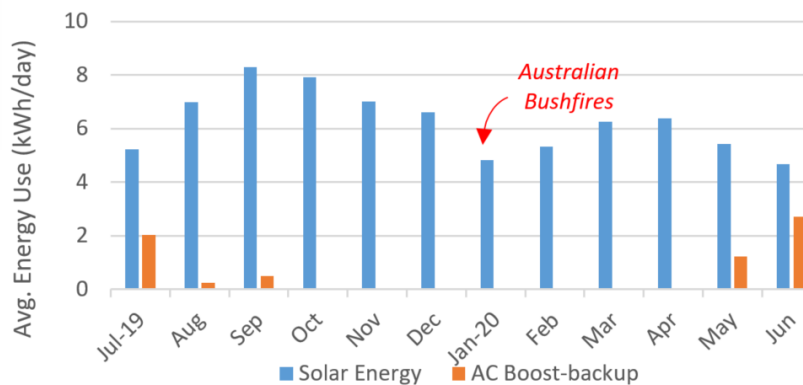


* Based on Sydney domestic electricity tariff as at July 2020 of AU\$0.289/kWh



ELWA in special variant "SC20" for Australia

Home Energy Use - daily avg. 2019-2020



All values can also easily be exported to a spreadsheet program.

ELWA Product details



- 0 – 2,000 W linear power control
- Target temperature adjustable with rotary knob
- Even works during grid blackouts
- For water tanks with capacities of 100 – 1,000 litre
- Internal consumption 2 W
- Efficiency ratio >99 % at nominal capacity
- Optional boost backup 750 W

Contact person

Reinhard Hofstaetter MSc
 International Sales
 reinhard.hofstaetter@my-pv.com
 +43 699 136 30 780